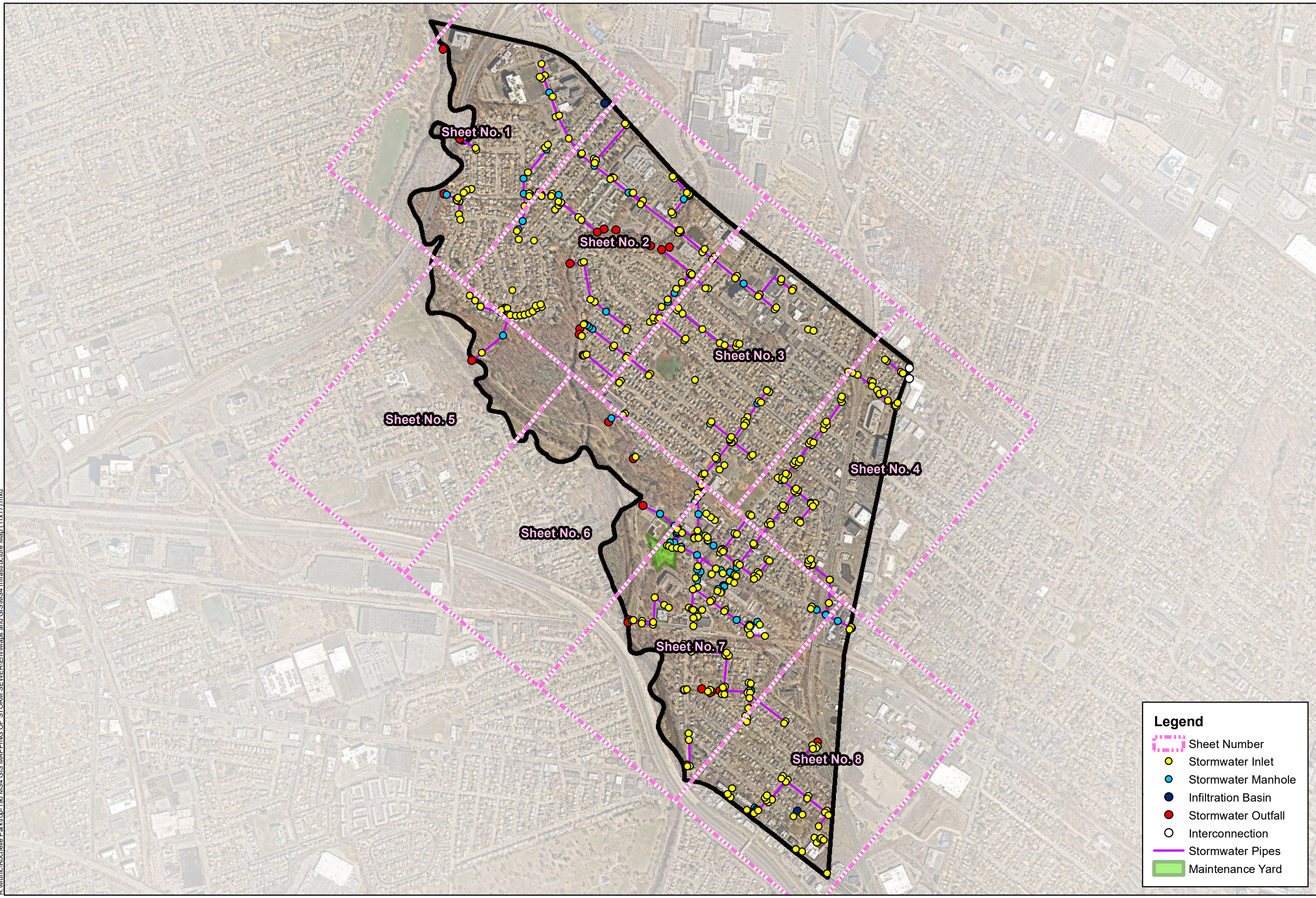




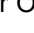





R:\Municipal\Rochelele Park\rop-190_MSA_GIS_MAPPING_OF_STORM_SEWER\Enw\Maps and GIS\MSA_Infrastructure_Map_11x17.mxd



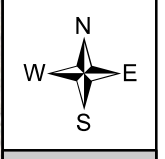
Legend

-  Sheet Number
-  Stormwater Inlet
-  Stormwater Manhole
-  Infiltration Basin
-  Stormwater Outfall
-  Interconnection
-  Stormwater Pipes
-  Maintenance Yard

Notes:
NearMap Image Date: March 21, 2023

Municipal Separate Storm Sewer System
Infrastructure Map
Township of Rochelle Park
Bergen County
New Jersey

BOSWELL ENGINEERING
ENGINEERS - SURVEYORS - PLANNERS - SCIENTISTS
330 Phillips Avenue South Hackensack, NJ 07606
Tel: 201-641-0770 • www.boswellengineering.com

Scale
1 in = 1,000 ft

Job No. ROP-190A

March 2024

Last Edit: 3/11/2024

Drawn By: JMW

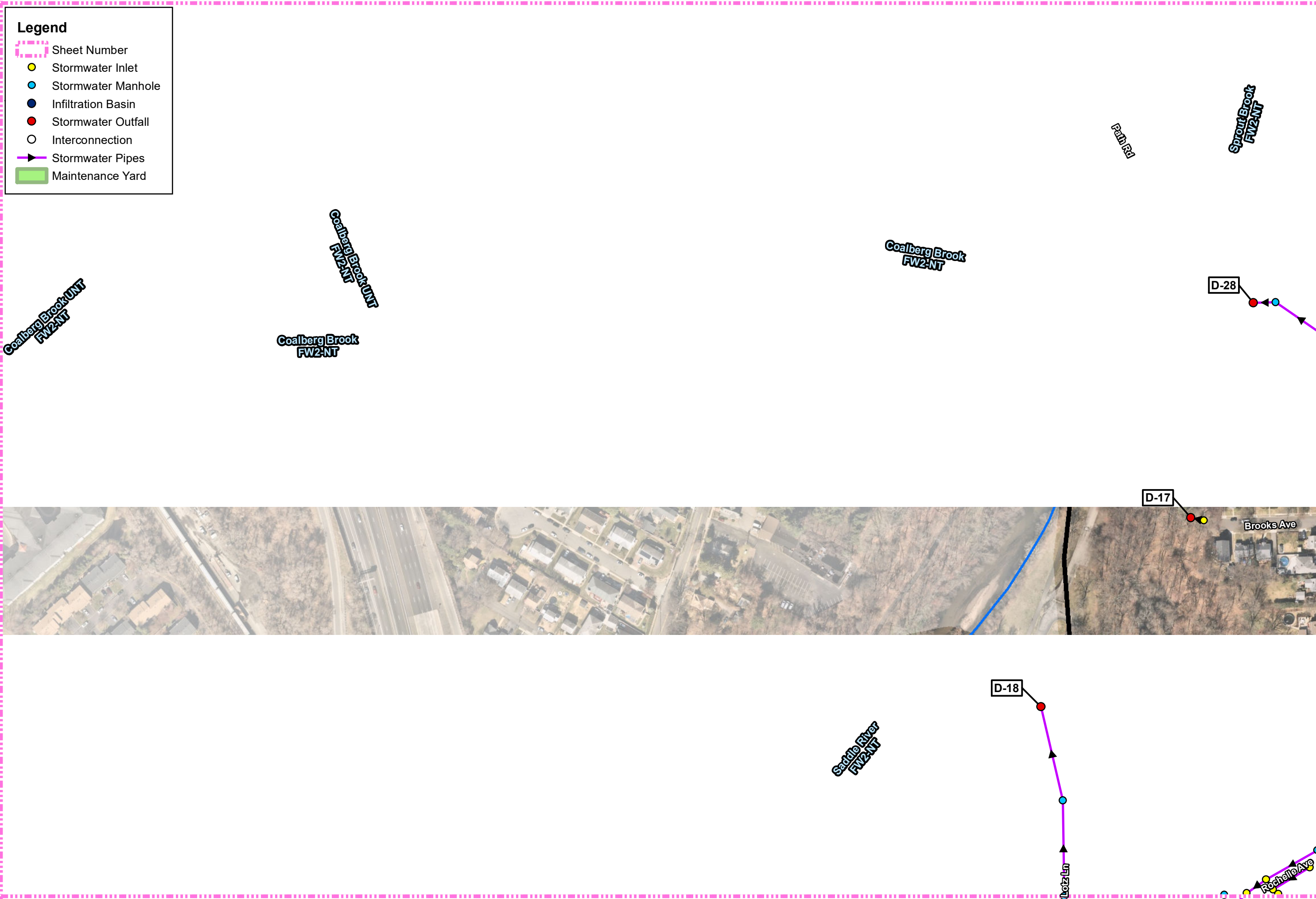
Check By: FJR

Key Map

R:\Municipal\Rochelle_Park\rop-190_MSA_GIS_MAPPING_OF_STORM_SEWER\Env\Maps and GIS\MSA_Infrastructure_Map_11x17.mxd

Legend

- Sheet Number
- Stormwater Inlet
- Stormwater Manhole
- Infiltration Basin
- Stormwater Outfall
- Interconnection
- ▶ Stormwater Pipes
- Maintenance Yard



<p>BOSWELL ENGINEERING <small>ENGINEERS - SURVEYORS - PLANNERS - SCIENTISTS</small> <small>330 Phillips Avenue South Hackensack, NJ 07606</small> <small>Tel: 201-641-0770 • www.boswellengineering.com</small></p>
<p>Scale 1 in = 200 ft</p>
<p>Job No. ROP-190A</p>
<p>March 2024</p>
<p>Last Edit: 3/11/2024</p>
<p>Drawn By: JMW</p>
<p>Check By: FJR</p>
<p>Sheet 6 of 8</p>

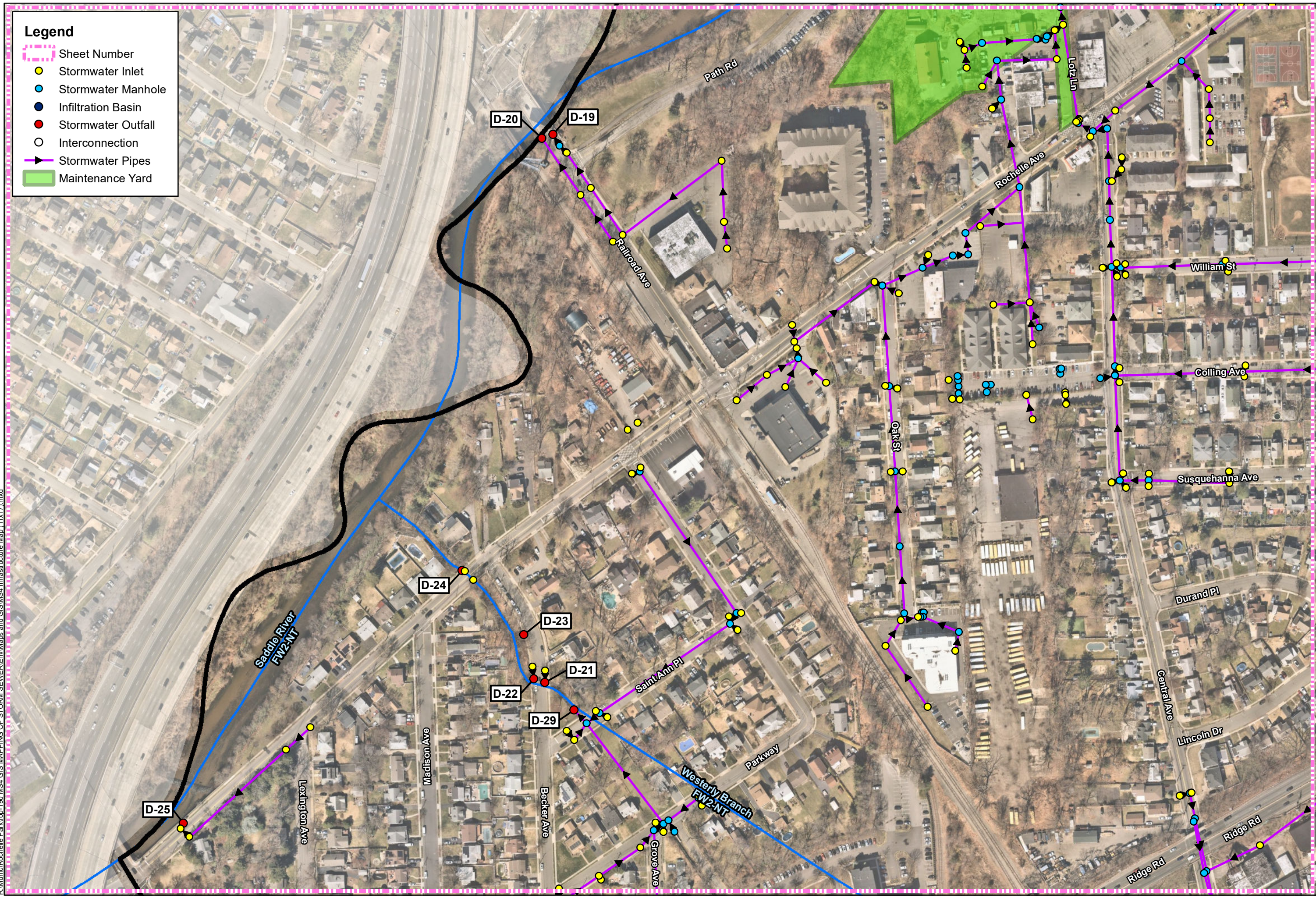
Municipal Separate Storm Sewer System Infrastructure Map
 Township of Rochelle Park
 Bergen County
 New Jersey

Notes:
 NearMap Image Date: March 21, 2023

R:\Municipal\Rochelle Park\rop-190_MSA_GIS_MAPPING_OF_STORM_SEWER\Env\Maps and GIS\MSA_Infrastructure_Map_11x17.mxd

Legend

- Sheet Number
- Stormwater Inlet
- Stormwater Manhole
- Infiltration Basin
- Stormwater Outfall
- Interconnection
- ▶ Stormwater Pipes
- Maintenance Yard



Notes:
NearMap Image Date: March 21, 2023

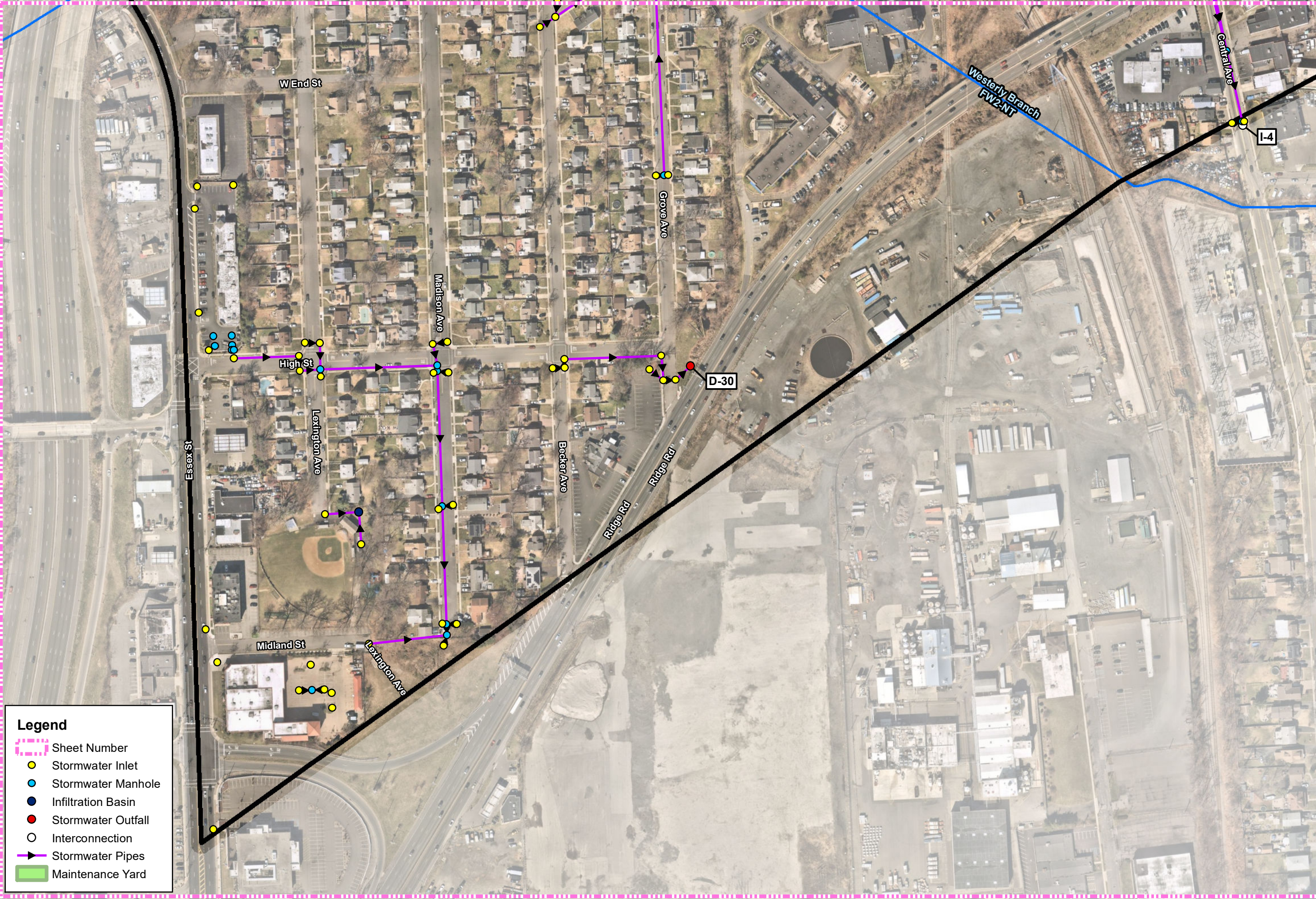
Municipal Separate Storm Sewer System
Infrastructure Map
Township of Rochelle Park
Bergen County
New Jersey

BOSWELL ENGINEERING
ENGINEERS - SURVEYORS - PLANNERS - SCIENTISTS
330 Phillips Avenue South Hackensack, NJ 07606
Tel: 201-641-0770 • www.boswellengineering.com

Scale
1 in = 200 ft

Job No. ROP-190A
March 2024
Last Edit: 3/11/2024
Drawn By: JMW
Check By: FJR
Sheet 7 of 8

R:\Municipal\Rochele Park\rop_190_MSA_GIS_MAPPING_OF_STORM_SEWER\Enw\Maps and GIS\MSA_Infrastructure_Map_11x17.mxd



Legend

- Sheet Number
- Stormwater Inlet
- Stormwater Manhole
- Infiltration Basin
- Stormwater Outfall
- Interconnection
- Stormwater Pipes
- Maintenance Yard

Notes:
NearMap Image Date: March 21, 2023

Municipal Separate Storm Sewer System
Infrastructure Map
Township of Rochelle Park
Bergen County
New Jersey

BOSWELL ENGINEERING
ENGINEERS - SURVEYORS - PLANNERS - SCIENTISTS
330 Phillips Avenue South Hackensack, NJ 07606
Tel: 201-641-0770 • www.boswellengineering.com

Scale
1 in = 200 ft

Job No. ROP-190A
March 2024
Last Edit: 3/11/2024
Drawn By: JMW
Check By: FJR
Sheet 8 of 8